

The Model 648 Heater consists of element assemblies mounted inside a stainless steel tube which is enclosed in an insulated jacket. The jacket allows maximum heat transfer to the airstream while maintaining a low surface temperature. This makes the Model 648 ideal for mounting in vulnerable areas or in enclosures containing other equipment.

The inlet of the 648 is flanged and the outlet is either flanged or provided with a Duct / Hose adapter.

The terminal box is manufactured from aluminium and is protected to IP65. Connection is made to each element using DIN rail termination for ease of wiring.

The Model 648 Heater will give an outlet temperature up to 300°C and is available in loadings of 6, 9, 12, 18, 20 or 24kW. The inlet of the 648 can be fitted with a thermal cut-out to protect the element in the event of the airflow becoming restricted.

A variety of temperature controls are available ranging from switching devices to provide fixed loadings through to systems to monitor and regulate the output temperature.

A range of adapters is available to couple the Model 648 with a variety of SECOMAK Fans.

Electrical:

415V or 380V 3 phase

220V or 240V single phase

Other voltages available
with limited loading.

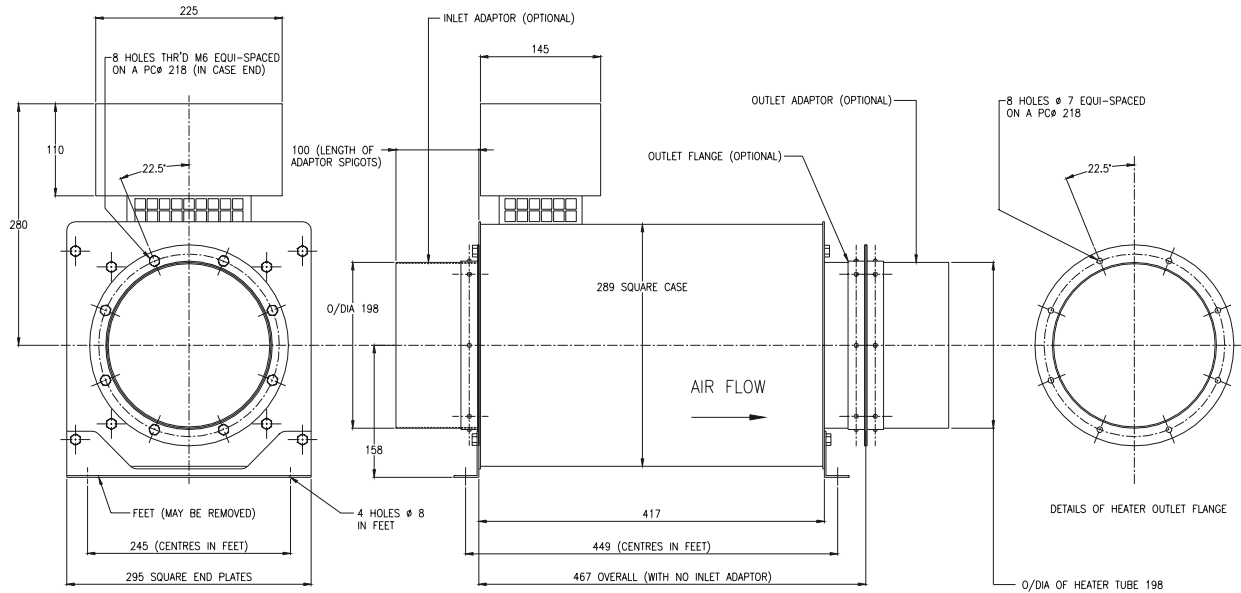
Maximum Outlet Temperature: 300°C

Resistance to Airflow (approx.)

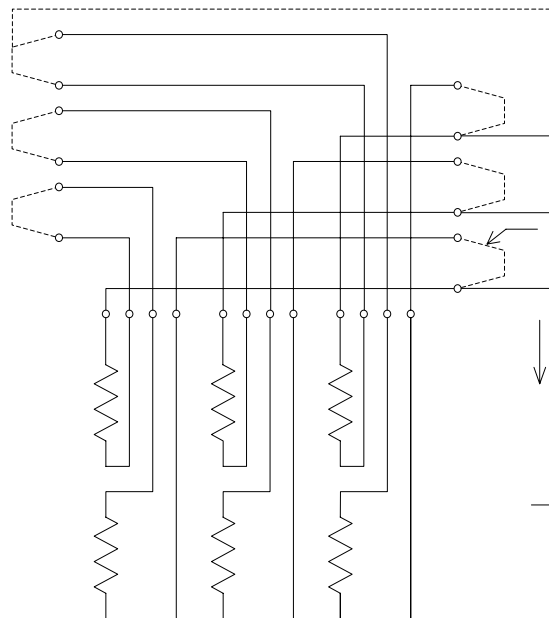
0.22" w.g. at 200 ft³/min

3.50" w.g. at 800 ft³/min

10.80" w.g. at 1400 ft³/min



MODEL 648



WIRING DETAILS